

MARCH 2022, NUMBER 2

# BELMOD NEWSLETTER

Dear reader,

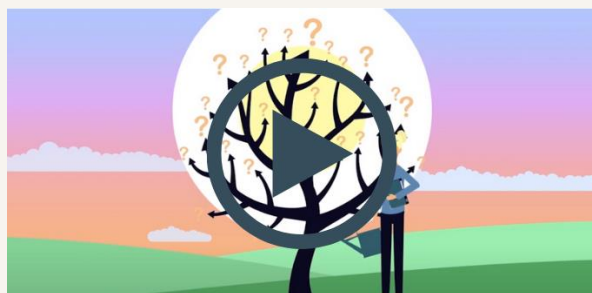
Below you will find the second BELMOD newsletter. Did you miss the previous one? We publish all newsletters on our [website](#). Do you have any questions? Remarks? Suggestions? Contact us via [belmod@minsoc.fed.be](mailto:belmod@minsoc.fed.be).

Enjoy reading!

The BELMOD team

## BELMOD in motion

You don't know BELMOD yet? This video briefly explains what BELMOD is and what you can do with it!



## BELMOD presentation on 3 February: a great success!

On 3 February we organised an online presentation of BELMOD to present our microsimulation model and some initial results to the wider academic and policy community.

By way of introduction, the BELMOD project was briefly framed, followed by an explanation of what a microsimulation model is and how EUROMOD and BELMOD relate to each other. The content of the dataset that we use for simulations with BELMOD was also explained. As first results, we showed the effect of a harmonisation and simplification of the means tests of some social assistance measures by exempting the owner-occupied house and the received maintenance allowances and by considering the paid maintenance allowances as deductible expenditures. The University of Antwerp presented BELMOD research into the impact of an increase in the employment rate to 80% on the poverty targets in Belgium. We ended with the further planning of BELMOD.

We would like to thank all those present for their active participation! The attendance and exchange showed that there is a great interest in BELMOD and its many expansion possibilities. We will take everything into account in the further development and use of the model.

The presentations with the introduction, the explanation of BELMOD and the further planning can be found on our [website](#). The simulation examples will be further refined before they are distributed. Keep following our newsletter to be the first to know about our publications.

## EUROMOD-training

Are you interested in learning to work with [EUROMOD](#), the microsimulation model BELMOD is based on? The European Commission's Joint Research Centre (JRC) is organising an online EUROMOD training course in April. During this training you will learn what a microsimulation model is and you will be introduced to the EUROMOD language and way of programming. Besides theory, you also get the chance to practice. On the basis of a hypothetical dataset, you will be presented with various exercises. After this training you will have the necessary basic knowledge to take your first steps in BELMOD. Excited to get started? Registration is possible until 20 March!

### Practical information:

- EUROMOD training organised by JRC
- 6 sessions of 3 hours on 26, 27 and 28 April 2022
- Online
- Free
- Language: English
- Registration is required and can be done until 20 March
- More info and the registration instructions can be found [here](#)



## Our contribution at the 'Mutual learning event on DIA'

On 7 February we presented the BELMOD model at the Mutual learning event on DIA organised by DG EMPL of the European Commission. DIA stands for 'Distributional Impact Assessment' and is an effective tool for assessing the impact of policy reforms across the income distribution. DG EMPL is organising this event for representatives of EU Member States who are actively carrying out DIAs in national administrations or for those Member States, where DIAs are not yet widely applied, but who could be involved in such an analysis in the future. The aim is to exchange and learn from practical experience and for the European Commission to learn more about the experiences of the Member States. The European Commission intends to use it to draft guidelines for the Member States on the use of DIAs (as proposed in the Action Plan for the European Pillar of Social Rights).

DIAs are currently not systematically carried out in Belgium. However, BELMOD could be used for this purpose. At the request of DG EMPL, the BELMOD team presented the model, focusing on the underlying data, the limitations of the model, and the plans for further expansion and use of the model.

Wilt u de nieuwsbrief in het Nederlands ontvangen?  
Wilt u zich uitschrijven? Stuur ons een [mailtje](#).  
Vous souhaitez recevoir la newsletter en français ?  
Vous souhaitez vous désabonner ? Veuillez envoyer un  
[courriel](#).  
Would you like to unsubscribe? Please send an [email](#).



Federale Overheidsdienst  
**Sociale Zekerheid**  
Service public fédérale  
**Sécurité sociale**

